

13 March 2001

SURVEYING AND MAPPING, INC.
COORDINATE DATA SHEET
JOB: CITY OF DECATUR
CLIENT: CITY OF DECATUR
SAM JOB#: 21038-20

HORIZONTAL DATUM: NAD-83 GEODETIC
VERTICAL DATUM: NAVD-88
VERTICAL UNITS: U.S. SURVEY FEET

STATION ID	LATITUDE	LONGITUDE	ELEVATION
001	33°15'25.05313"N	097°38'53.27566"W	877.35
002	33°16'37.95381"N	097°39'37.12621"W	812.59
003	33°16'17.49090"N	097°33'16.34394"W	904.82
004	33°16'12.55529"N	097°32'43.32348"W	903.14
005	33°11'53.33874"N	097°33'11.63128"W	980.74
006	33°11'20.75824"N	097°33'22.42855"W	989.77
007	33°11'10.96430"N	097°39'31.07867"W	780.80
008	33°11'30.73080"N	097°39'22.45211"W	815.91
009	33°13'51.50084"N	097°36'55.49163"W	920.87
010	33°14'17.52680"N	097°36'03.93950"W	1053.91
011	33°14'05.33737"N	097°35'04.77975"W	1082.41
012	33°13'17.01803"N	097°35'42.75164"W	974.60
013	33°12'52.87959"N	097°34'09.55654"W	1045.11

HORIZONTAL DATUM: NAD-83
VERTICAL DATUM: NAVD-88
COORDINATE SYSTEM: U.S. STATE PLANE 1983 (1993 HARN)
ZONE: TEXAS NORTH CENTRAL (4202)
UNITS: U.S. SURVEY FEET

STATION ID	NORTHING	EASTING	ELEVATION
001	7141290.249	2228892.364	877.35
002	7148627.682	2225110.251	812.59
003	7146834.335	2257452.457	904.82
004	7146360.892	2260260.176	903.14
005	7120142.902	2258093.114	980.74
006	7116842.112	2257205.326	989.77
007	7115586.193	2225888.278	780.80
008	7117589.658	2226605.277	815.91
009	7131918.506	2238972.662	920.87
010	7134585.849	2243328.573	1053.91
011	7133397.372	2248363.435	1082.41
012	7128486.306	2245180.615	974.60
013	7126116.053	2253118.299	1045.11

TO ADJUST THE ABOVE GRID COORDINATES TO SURFACE VALUES, MULTIPLY THEM BY THE
COMBINED SCALE FACTOR: 1.00016

HORIZONTAL CONTROL POINTS

DATUM: NAD-83
COORDINATE SYSTEM: U.S. STATE PLANE 1983 (1993 HARN)
ZONE: TEXAS NORTH CENTRAL (4202)

STATION ID	LATITUDE	LONGITUDE
E 1486	33°25'03.75207"N	097°44'38.87982"W
IF9 A	33°10'55.30621"N	097°49'46.61957"W
8F7 A	33°15'18.57826"N	097°34'51.57108"W
WOODIE	33°08'56.53528"N	097°31'50.67738"W

VERTICAL CONTRL POINTS

DATUM: NAVD-88
GEOID: GEOID 1999
UNITS: U.S. SURVEY FEET

STATION ID	ELEVATION
8F7 A	1045.06
WOODIE	1040.83
E 1486	930.06
R 190	767.68

PROCESSING NOTES: THE ELEVATION FOR STATION 8F7 A WAS ESTABLISHED BY RUNNING A 3-WIRE LEVEL LOOP FROM THE FIRST ORDER NGS BENCH MARK P 132 (ELEV. 1059.24') TO STATION 8F7 A. THE LOOP WAS CLOSED BACK TO BENCH MARK P 132 WITH NO VERTICAL ERROR.

GPS PROCESSING BY:

SURVEYING AND MAPPING, INC.
4209 CAPITOL OF TEXAS HIGHWAY SOUTH, SUITE 125
AUSTIN, TEXAS 78704
(512) 447-0575
FAX: (512) 326-3029

CITY OF DECATUR
GPS SURVEY MONUMENT DATA SHEET

SURVEYED BY: SAM Inc. AUSTIN, TEXAS

MONUMENT REFERENCE No.: 1 DATE MONUMENT ESTABLISHED: MARCH 13, 2001

REFERENCE MONUMENTS (BASIS): NGS MONUMENTS 8F7 A, WOODIE, E 1486, IF9A, and R 190

HORIZONTAL DATUM: NAD-83(1993 HARN)
VERTICAL DATUM: NAVD-88
COORDINATE SYSTEM: TEXAS STATE PLANE
ZONE: NORTH CENTRAL (4202)
UNITS: U.S. SURVEY FEET

GRID NORTHING: 7141290.25

GRID EASTING: 2228892.36

LATITUDE: 33° 15' 25.05313" N LONGITUDE: 097° 38' 53.27566" W

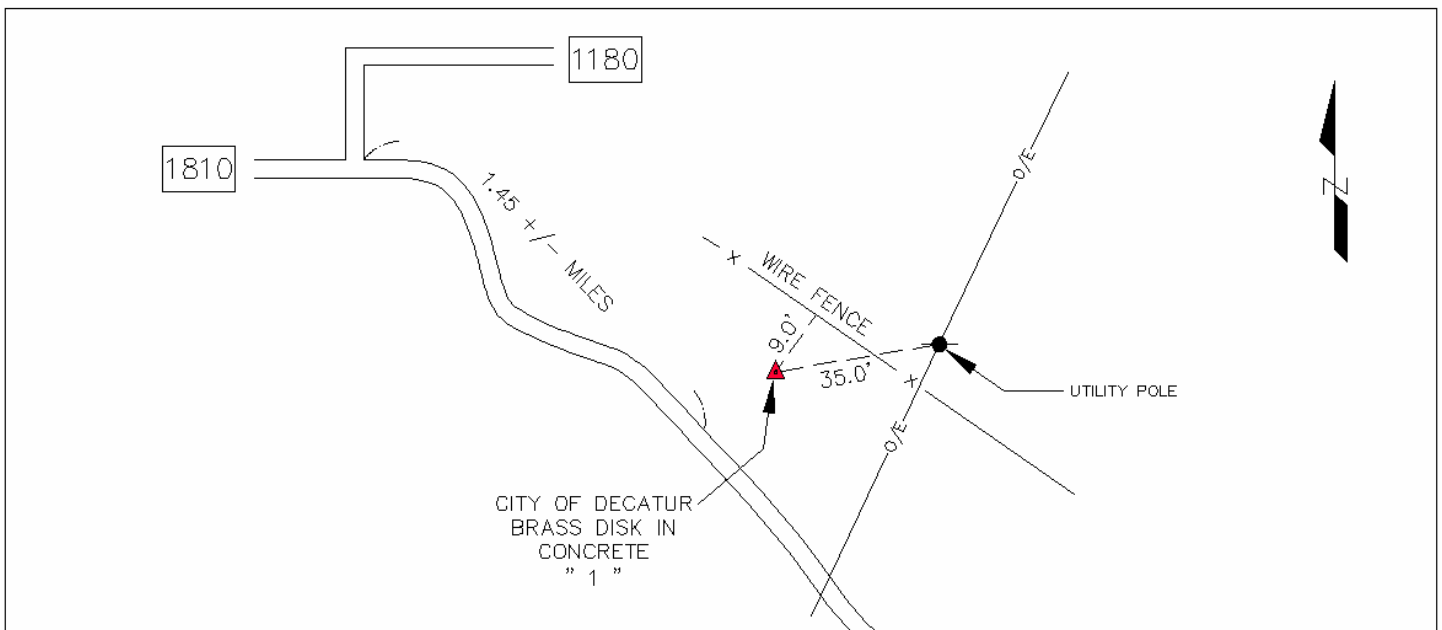
SCALE FACTOR: 1.00016

ELEVATION: 877.35

MONUMENT DESCRIPTION: BRASS DISK SET IN CONCRETE STAMPED " 1 "

DRIVE TO DESCRIPTION: NORTH R.O.W. OF F.M. 1810, APPROXIMATELY 1.45 MI. SOUTH OF THE INTERSECTION WITH Co. Rd. 1180.

SKETCH
NOT TO SCALE



CITY OF DECATUR
GPS SURVEY MONUMENT DATA SHEET

SURVEYED BY: SAM, INC. AUSTIN, TEXAS

MONUMENT REFERENCE No.: 2 DATE MONUMENT ESTABLISHED: MARCH 13, 2001

REFERENCE MONUMENTS (BASIS): NGS MONUMENTS 8F7 A, WOODIE, E 1486, IF9A, and R 190

HORIZONTAL DATUM: NAD-83(1993 HARN)
VERTICAL DATUM: NAVD-88
COORDINATE SYSTEM: TEXAS STATE PLANE
ZONE: NORTH CENTRAL (4202)
UNITS: U.S. SURVEY FEET

GRID NORTHING: 7148627.68

GRID EASTING: 2225110.25

LATITUDE: 33° 16' 37.95381" N LONGITUDE: 097° 39' 37.12621" W

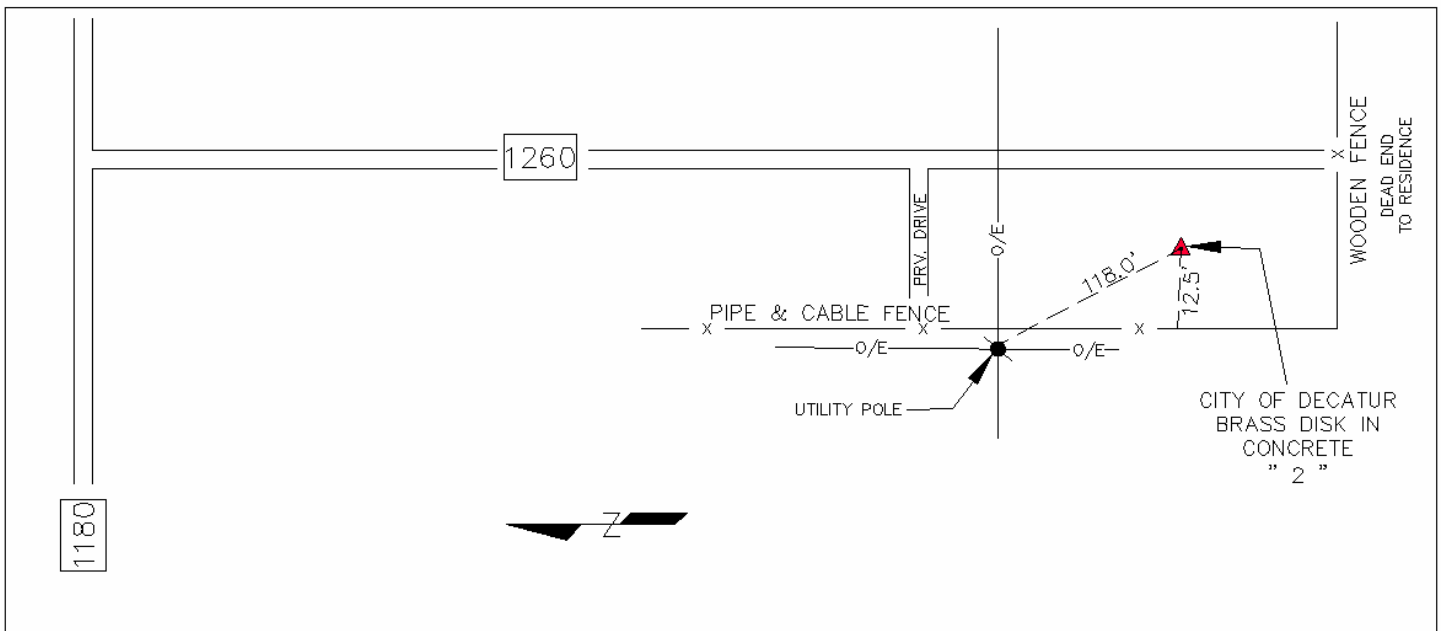
SCALE FACTOR: 1.00016

ELEVATION: 812.59

MONUMENT DESCRIPTION: BRASS DISK SET IN CONCRETE STAMPED " 2 "

DRIVE TO DESCRIPTION: WEST R.O.W. OF Co. Rd. 1260, AT DEAD END.

SKETCH
NOT TO SCALE



CITY OF DECATUR
GPS SURVEY MONUMENT DATA SHEET

SURVEYED BY: SAM, INC. AUSTIN, TEXAS

MONUMENT REFERENCE No.: 3 DATE MONUMENT ESTABLISHED: MARCH 13, 2001

REFERENCE MONUMENTS (BASIS): NGS MONUMENTS 8F7 A, WOODIE, E 1486, IF9A, and R 190

HORIZONTAL DATUM: NAD-83(1993 HARN)
VERTICAL DATUM: NAVD-88
COORDINATE SYSTEM: TEXAS STATE PLANE
ZONE: NORTH CENTRAL (4202)
UNITS: U.S. SURVEY FEET

GRID NORTHING: 7146834.34

GRID EASTING: 2257452.46

LATITUDE: 33° 16' 17.49090" N LONGITUDE: 097° 33' 16.34394" W

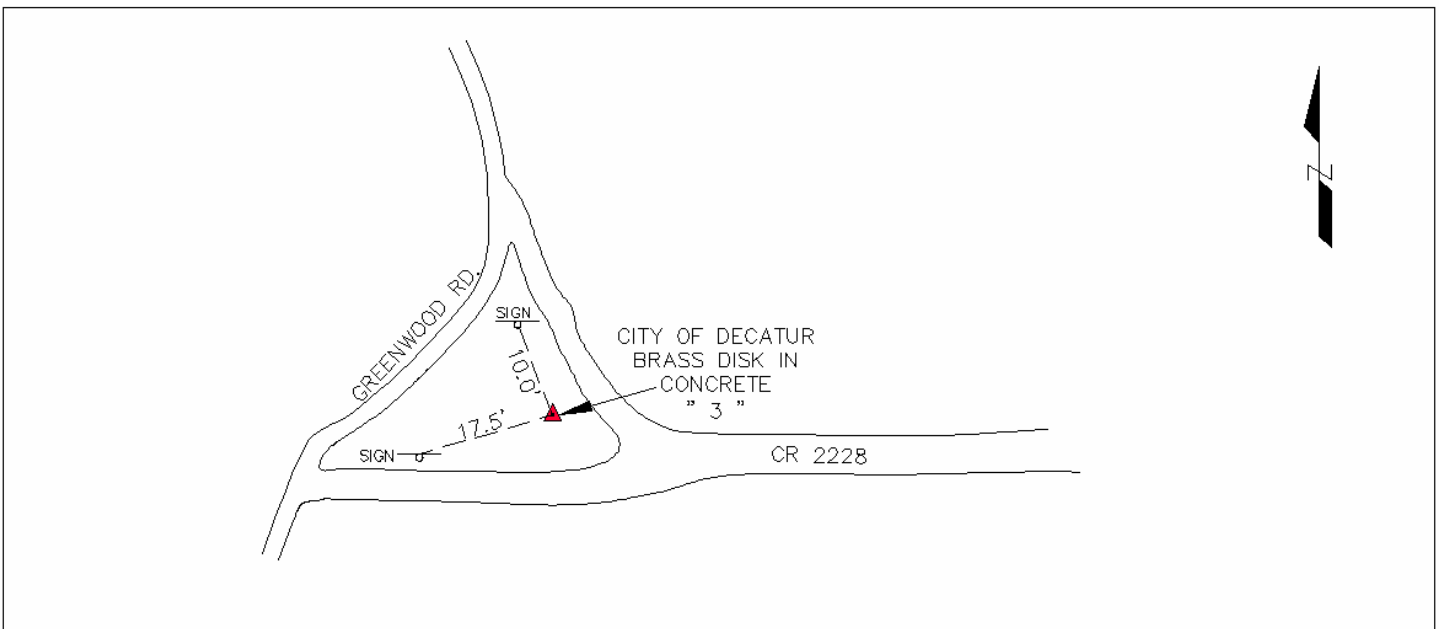
SCALE FACTOR: 1.00016

ELEVATION: 904.82

MONUMENT DESCRIPTION: BRASS DISK SET IN CONCRETE STAMPED " 3 "

DRIVE TO DESCRIPTION: IN GRASS ISLAND AT THE INTERSECTION OF Co. Rd. 2228 AND GREENWOOD Rd.

SKETCH
NOT TO SCALE



CITY OF DECATUR
GPS SURVEY MONUMENT DATA SHEET

SURVEYED BY: SAM, INC. AUSTIN, TEXAS

MONUMENT REFERENCE No.: 4 DATE MONUMENT ESTABLISHED: MARCH 13, 2001

REFERENCE MONUMENTS (BASIS): NGS MONUMENTS 8F7 A, WOODIE, E 1486, IF9A, and R 190

HORIZONTAL DATUM: NAD-83(1993 HARN)
VERTICAL DATUM: NAVD-88
COORDINATE SYSTEM: TEXAS STATE PLANE
ZONE: NORTH CENTRAL (4202)
UNITS: U.S. SURVEY FEET

GRID NORTHING: 7146360.89

GRID EASTING: 2260260.18

LATITUDE: 33° 16' 12.5529" N LONGITUDE: 097° 32' 43.32348" W

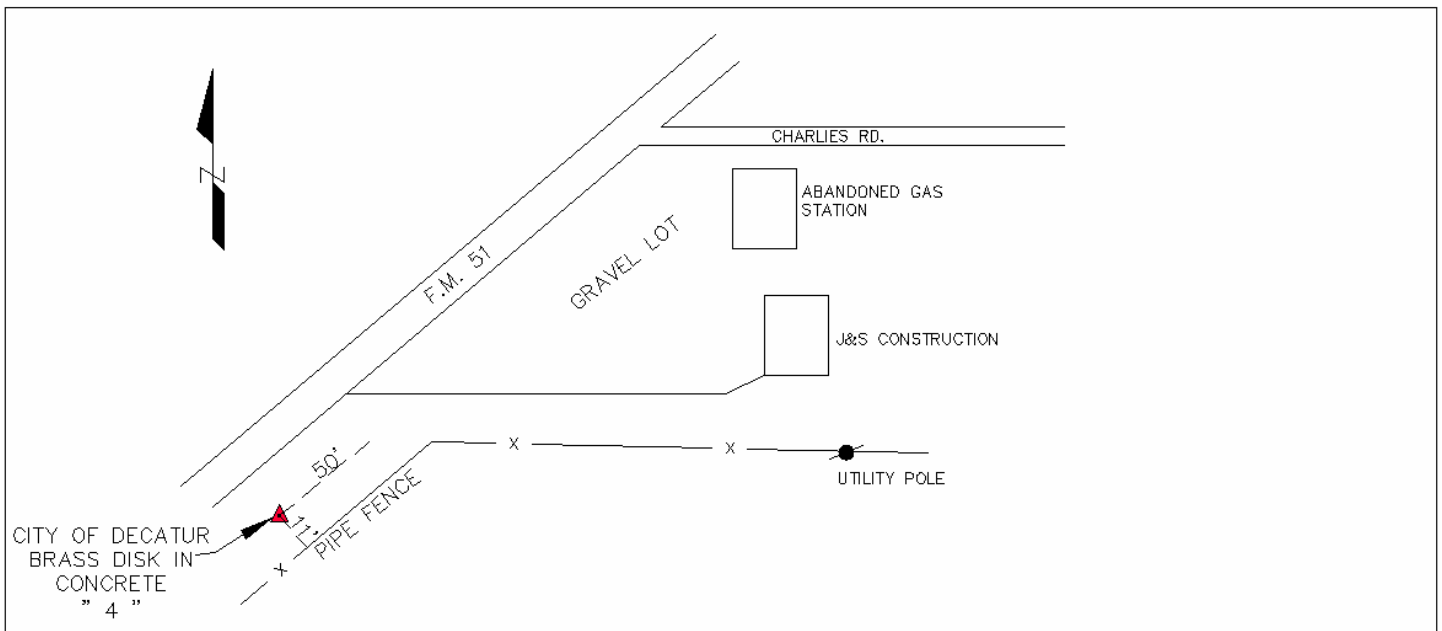
SCALE FACTOR: 1.00016

ELEVATION: 903.14

MONUMENT DESCRIPTION: BRASS DISK SET IN CONCRETE STAMPED " 4 "

DRIVE TO DESCRIPTION: EAST R.O.W. OF FM 51, SOUTH OF CHARLIES Rd.

SKETCH
NOT TO SCALE



CITY OF DECATUR
GPS SURVEY MONUMENT DATA SHEET

SURVEYED BY: SAM, INC. AUSTIN, TEXAS

MONUMENT REFERENCE No.: 5 DATE MONUMENT ESTABLISHED: MARCH 13, 2001

REFERENCE MONUMENTS (BASIS): NGS MONUMENTS 8F7 A, WOODIE, E 1486, IF9A, and R 190

HORIZONTAL DATUM: NAD-83(1993 HARN)
VERTICAL DATUM: NAVD-88
COORDINATE SYSTEM: TEXAS STATE PLANE
ZONE: NORTH CENTRAL (4202)
UNITS: U.S. SURVEY FEET

GRID NORTHING: 7120142.90

GRID EASTING: 2258093.11

LATITUDE: 33° 11' 53.33874" N LONGITUDE: 097° 33' 11.63128" W

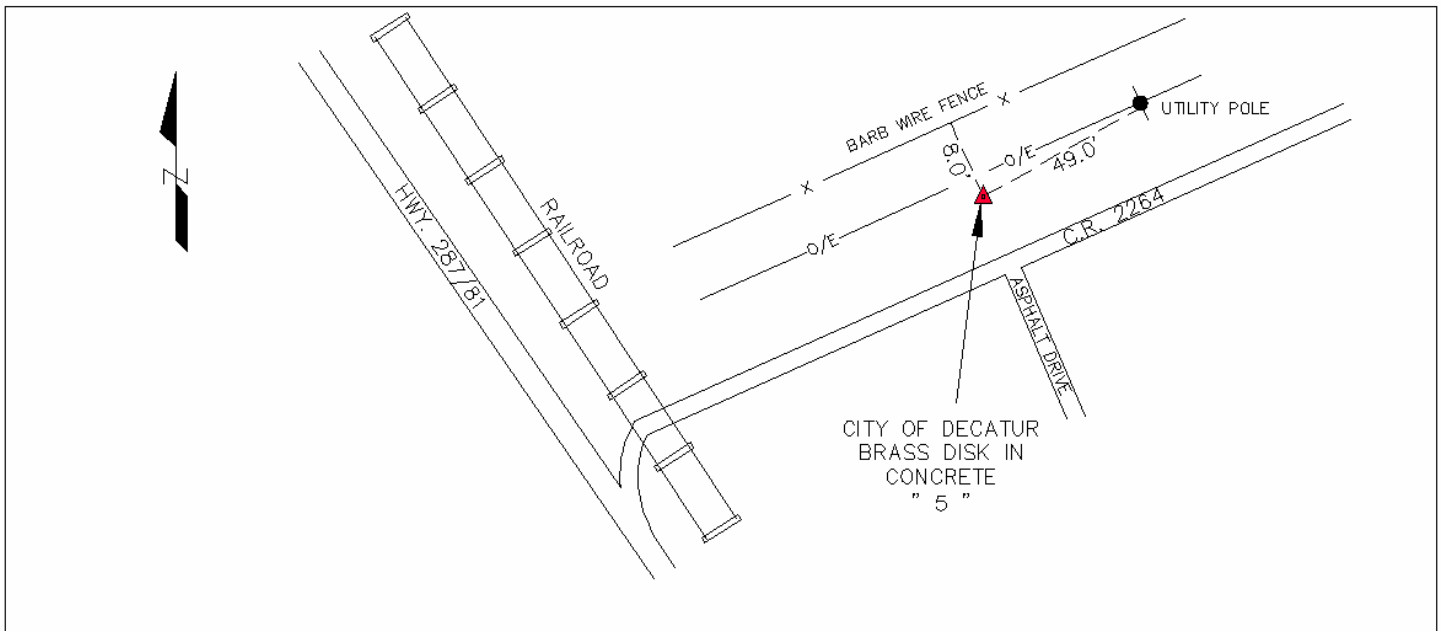
SCALE FACTOR: 1.00016

ELEVATION: 980.74

MONUMENT DESCRIPTION: BRASS DISK SET IN CONCRETE STAMPED " 5 "

DRIVE TO DESCRIPTION: NORTH R.O.W. OF Co. Rd. 2264, EAST OF THE INTERSECTION WITH US 287.

SKETCH
NOT TO SCALE



CITY OF DECATUR
GPS SURVEY MONUMENT DATA SHEET

SURVEYED BY: SAM, INC. AUSTIN, TEXAS

MONUMENT REFERENCE No.: 6 DATE MONUMENT ESTABLISHED: MARCH 13, 2001

REFERENCE MONUMENTS (BASIS): NGS MONUMENTS 8F7 A, WOODIE, E 1486, IF9A, and R 190

HORIZONTAL DATUM: NAD-83(1993 HARN)
VERTICAL DATUM: NAVD-88
COORDINATE SYSTEM: TEXAS STATE PLANE
ZONE: NORTH CENTRAL (4202)
UNITS: U.S. SURVEY FEET

GRID NORTHING: 7116842.11

GRID EASTING: 2257205.33

LATITUDE: 33° 11' 20.75824" N LONGITUDE: 097° 33' 22.42855" W

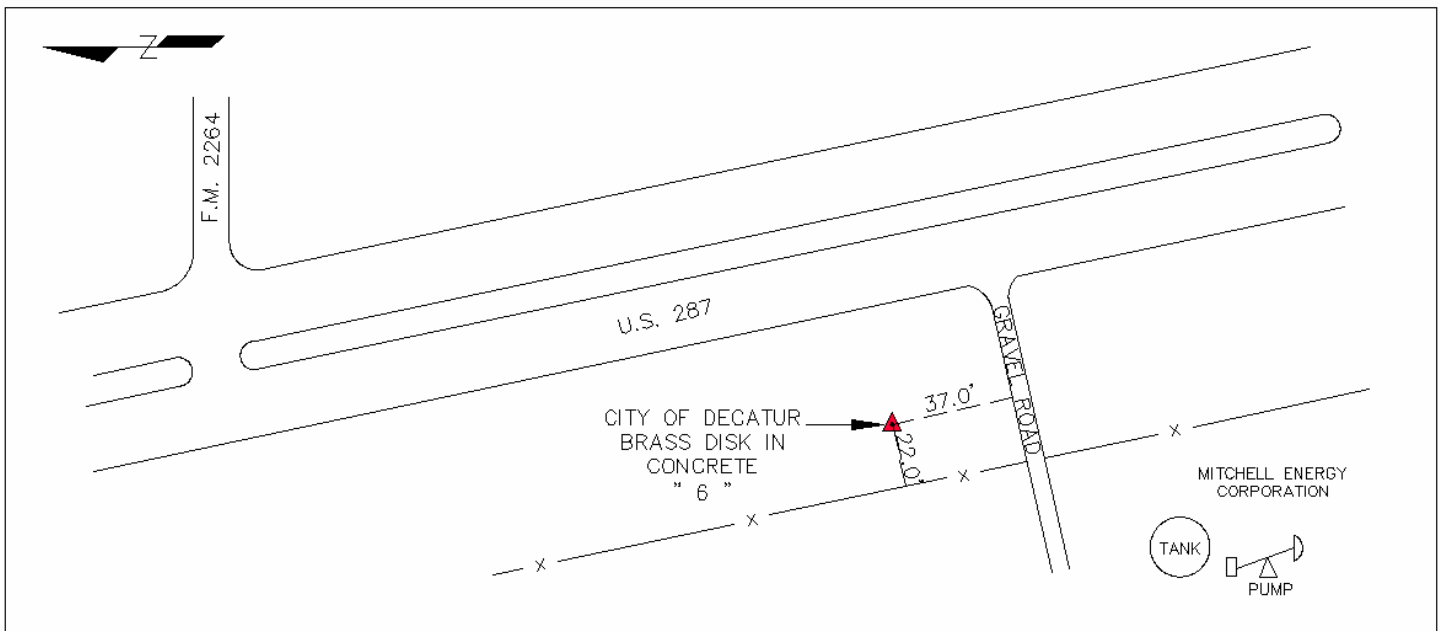
SCALE FACTOR: 1.00016

ELEVATION: 989.77

MONUMENT DESCRIPTION: BRASS DISK SET IN CONCRETE STAMPED " 6 "

DRIVE TO DESCRIPTION: WEST R.O.W. OF U.S. 287, SOUTH OF THE INTERSECTION WITH Co. Rd. 2264.

SKETCH
NOT TO SCALE



CITY OF DECATUR
GPS SURVEY MONUMENT DATA SHEET

SURVEYED BY: SAM, INC. AUSTIN, TEXAS

MONUMENT REFERENCE No.: 7 DATE MONUMENT ESTABLISHED: MARCH 13, 2001

REFERENCE MONUMENTS (BASIS): NGS MONUMENTS 8F7 A, WOODIE, E 1486, IF9A, and R 190

HORIZONTAL DATUM: NAD-83(1993 HARN)
VERTICAL DATUM: NAVD-88
COORDINATE SYSTEM: TEXAS STATE PLANE
ZONE: NORTH CENTRAL (4202)
UNITS: U.S. SURVEY FEET

GRID NORTHING: 7115586.19

GRID EASTING: 2225888.28

LATITUDE: 33° 11' 10.96430" N LONGITUDE: 097° 39' 31.07867" W

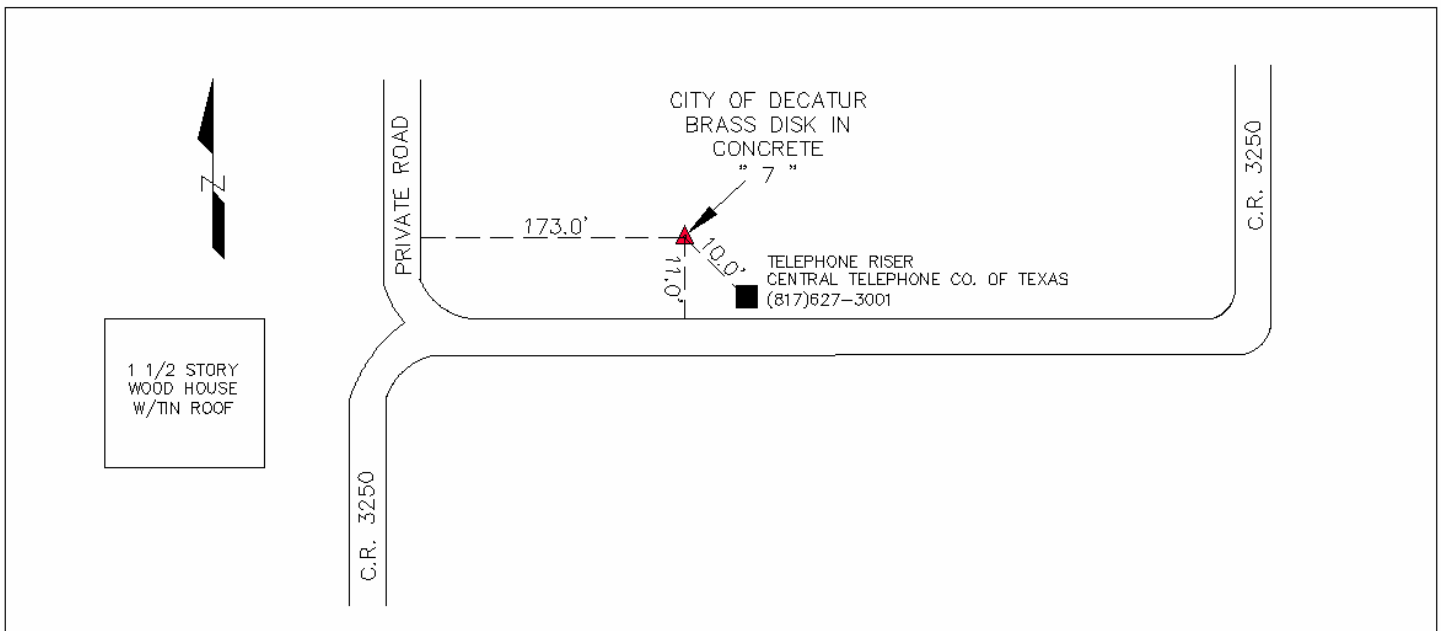
SCALE FACTOR: 1.00016

ELEVATION: 780.80

MONUMENT DESCRIPTION: BRASS DISK SET IN CONCRETE STAMPED " 7 "

DRIVE TO DESCRIPTION: NORTH R.O.W. OF Co. Rd. 3250.

SKETCH
NOT TO SCALE



CITY OF DECATUR
GPS SURVEY MONUMENT DATA SHEET

SURVEYED BY: SAM, INC. AUSTIN, TEXAS

MONUMENT REFERENCE No.: 8 DATE MONUMENT ESTABLISHED: MARCH 13, 2001

REFERENCE MONUMENTS (BASIS): NGS MONUMENTS 8F7 A, WOODIE, E 1486, IF9A, and R 190

HORIZONTAL DATUM: NAD-83(1993 HARN)
VERTICAL DATUM: NAVD-88
COORDINATE SYSTEM: TEXAS STATE PLANE
ZONE: NORTH CENTRAL (4202)
UNITS: U.S. SURVEY FEET

GRID NORTHING: 7117589.66

GRID EASTING: 2226605.28

LATITUDE: 33° 11' 30.73080" N LONGITUDE: 097° 39' 22.45211" W

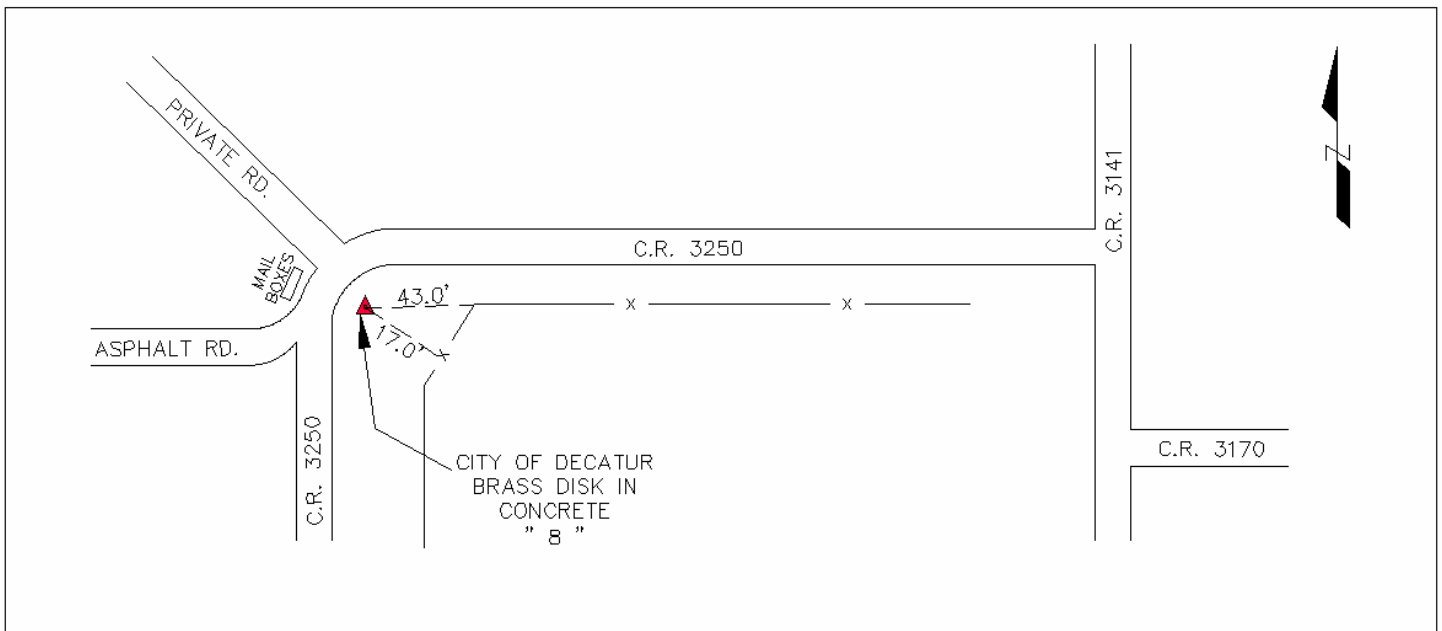
SCALE FACTOR: 1.00016

ELEVATION: 815.91

MONUMENT DESCRIPTION: BRASS DISK SET IN CONCRETE STAMPED " 8 "

DRIVE TO DESCRIPTION: SOUTH R.O.W. OF Co. Rd. 3250, WEST OF THE INTERSECTION WITH Co. Rd. 3141.

SKETCH
NOT TO SCALE



CITY OF DECATUR
GPS SURVEY MONUMENT DATA SHEET

SURVEYED BY: SAM, INC. AUSTIN, TEXAS

MONUMENT REFERENCE No.: 9 DATE MONUMENT ESTABLISHED: MARCH 13, 2001

REFERENCE MONUMENTS (BASIS): NGS MONUMENTS 8F7 A, WOODIE, E 1486, IF9A, and R 190

HORIZONTAL DATUM: NAD-83(1993 HARN)
VERTICAL DATUM: NAVD-88
COORDINATE SYSTEM: TEXAS STATE PLANE
ZONE: NORTH CENTRAL (4202)
UNITS: U.S. SURVEY FEET

GRID NORTHING: 7131918.51

GRID EASTING: 2238972.66

LATITUDE: 33° 13' 51.50084" N LONGITUDE: 097° 36' 55.49163" W

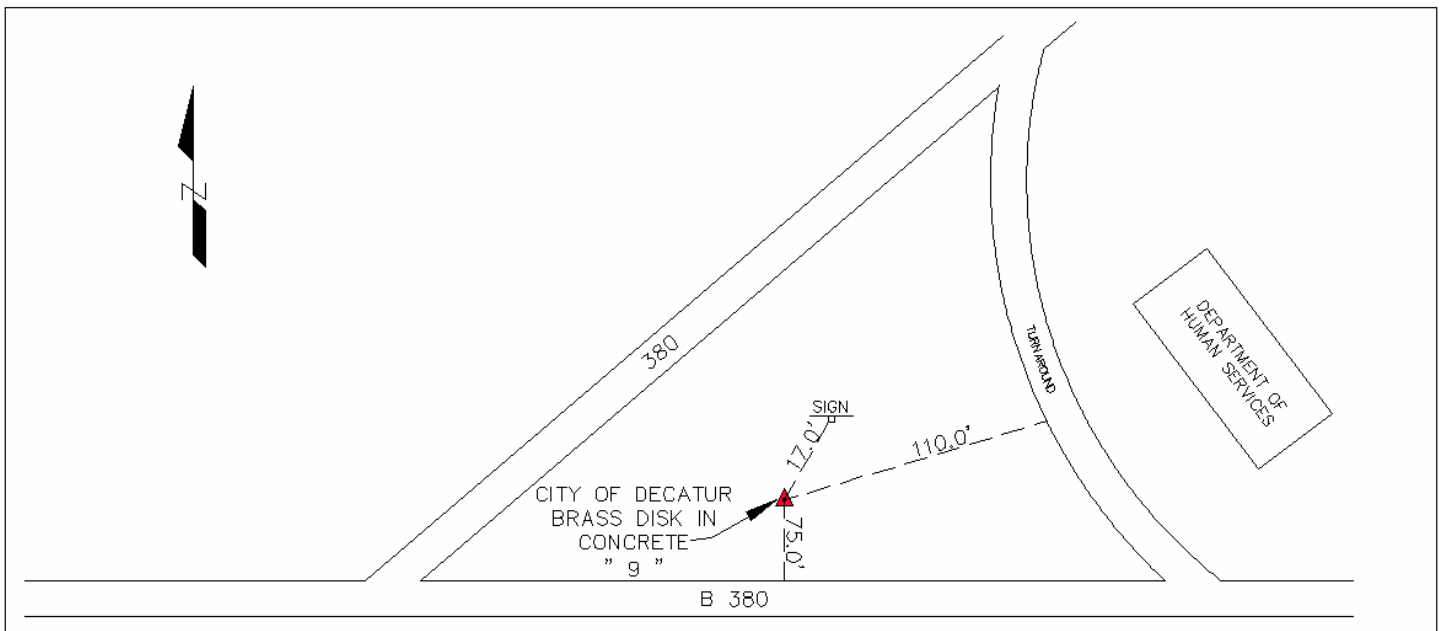
SCALE FACTOR: 1.00016

ELEVATION: 920.87

MONUMENT DESCRIPTION: BRASS DISK SET IN CONCRETE STAMPED " 9 "

DRIVE TO DESCRIPTION: NORTH R.O.W. OF BUSINESS 380, EAST OF THE INTERSECTION WITH US 380.

SKETCH
NOT TO SCALE



CITY OF DECATUR
GPS SURVEY MONUMENT DATA SHEET

SURVEYED BY: SAM, INC. AUSTIN, TEXAS

MONUMENT REFERENCE No.: 10 DATE MONUMENT ESTABLISHED: MARCH 13, 2001

REFERENCE MONUMENTS (BASIS): NGS MONUMENTS 8F7 A, WOODIE, E 1486, IF9A, and R 190

HORIZONTAL DATUM: NAD-83(1993 HARN)
VERTICAL DATUM: NAVD-88
COORDINATE SYSTEM: TEXAS STATE PLANE
ZONE: NORTH CENTRAL (4202)
UNITS: U.S. SURVEY FEET

GRID NORTHING: 7134585.85

GRID EASTING: 2243328.57

LATITUDE: 33° 14' 17.52680" N LONGITUDE: 097° 36' 03.93950" W

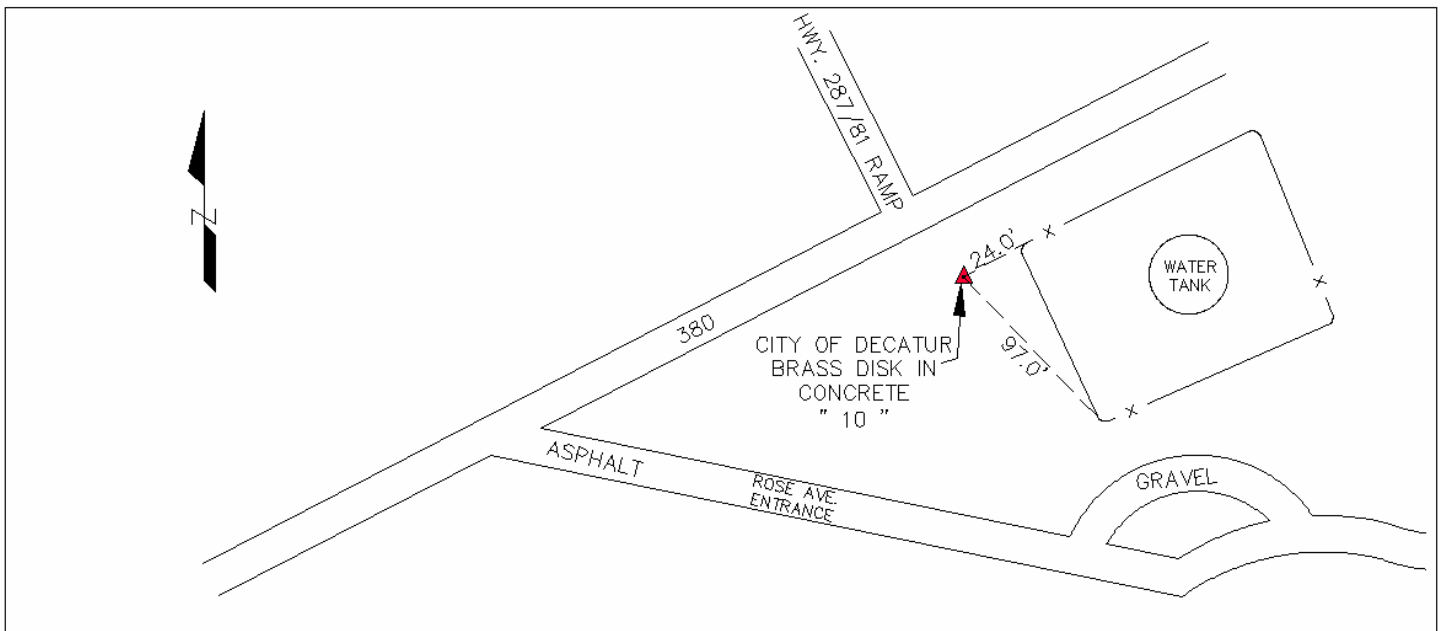
SCALE FACTOR: 1.00016

ELEVATION: 1053.91

MONUMENT DESCRIPTION: BRASS DISK SET IN CONCRETE STAMPED "10"

DRIVE TO DESCRIPTION: SOUTH R.O.W. OF U.S. 380, AT THE INTERSECTION WITH U.S. 287.

SKETCH
NOT TO SCALE



CITY OF DECATUR
GPS SURVEY MONUMENT DATA SHEET

SURVEYED BY: SAM, INC. AUSTIN, TEXAS

MONUMENT REFERENCE No.: 11 DATE MONUMENT ESTABLISHED: MARCH 13, 2001

REFERENCE MONUMENTS (BASIS): NGS MONUMENTS 8F7 A, WOODIE, E 1486, IF9A, and R 190

HORIZONTAL DATUM: NAD-83(1993 HARN)
VERTICAL DATUM: NAVD-88
COORDINATE SYSTEM: TEXAS STATE PLANE
ZONE: NORTH CENTRAL (4202)
UNITS: U.S. SURVEY FEET

GRID NORTHING: 7133397.37

GRID EASTING: 2248363.44

LATITUDE: 33° 14' 05.33737" N LONGITUDE: 097° 35' 04.77975" W

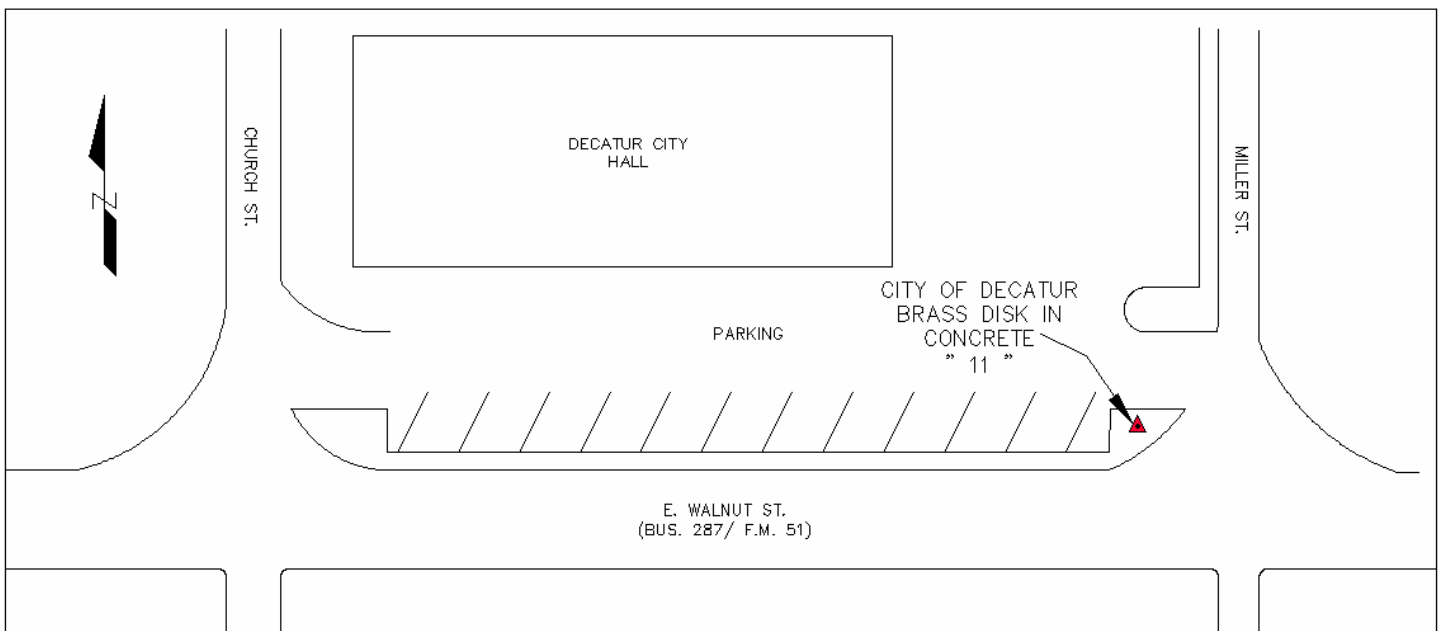
SCALE FACTOR: 1.00016

ELEVATION: 1082.41

MONUMENT DESCRIPTION: BRASS DISK SET IN CONCRETE STAMPED " 11 "

DRIVE TO DESCRIPTION: NORTHWEST CORNER OF THE INTERSECTION OF E. WALNUT St. AND MILLER St.

SKETCH
NOT TO SCALE



CITY OF DECATUR
GPS SURVEY MONUMENT DATA SHEET

SURVEYED BY: SAM, INC. AUSTIN, TEXAS

MONUMENT REFERENCE No.: 12 DATE MONUMENT ESTABLISHED: MARCH 13, 2001

REFERENCE MONUMENTS (BASIS): NGS MONUMENTS 8F7 A, WOODIE, E 1486, IF9A, and R 190

HORIZONTAL DATUM: NAD-83(1993 HARN)
VERTICAL DATUM: NAVD-88
COORDINATE SYSTEM: TEXAS STATE PLANE
ZONE: NORTH CENTRAL (4202)
UNITS: U.S. SURVEY FEET

GRID NORTHING: 7128486.31

GRID EASTING: 2245180.62

LATITUDE: 33° 13' 17.01803" N LONGITUDE: 097° 35' 42.75164" W

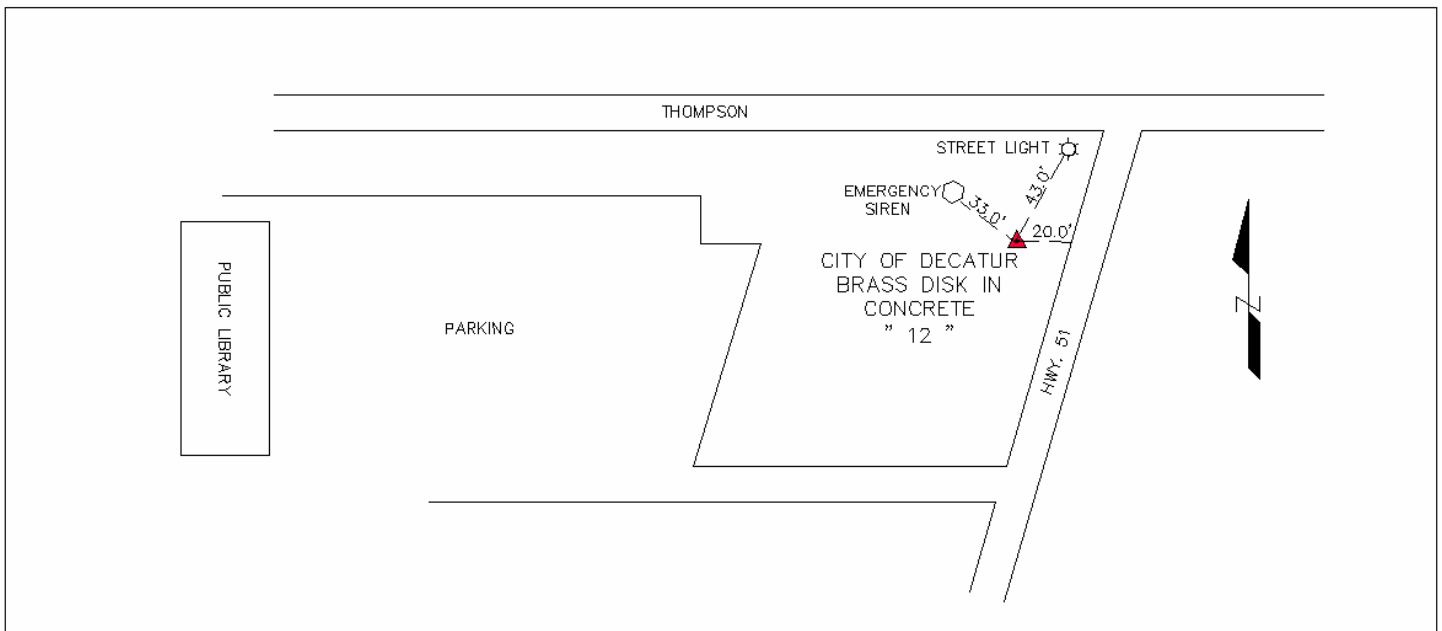
SCALE FACTOR: 1.00016

ELEVATION: 974.60

MONUMENT DESCRIPTION: BRASS DISK SET IN CONCRETE STAMPED " 12 "

DRIVE TO DESCRIPTION: WEST R.O.W. OF HWY. 51, SOUTH OF THE INTERSECTION WITH THOMPSON St.

SKETCH
NOT TO SCALE



CITY OF DECATUR
GPS SURVEY MONUMENT DATA SHEET

SURVEYED BY: SAM, INC. AUSTIN, TEXAS

MONUMENT REFERENCE No.: 13 DATE MONUMENT ESTABLISHED: MARCH 13, 2001

REFERENCE MONUMENTS (BASIS): NGS MONUMENTS 8F7 A, WOODIE, E 1486, IF9A, and R 190

HORIZONTAL DATUM: NAD-83(1993 HARN)
VERTICAL DATUM: NAVD-88
COORDINATE SYSTEM: TEXAS STATE PLANE
ZONE: NORTH CENTRAL (4202)
UNITS: U.S. SURVEY FEET

GRID NORTHING: 7126116.05

GRID EASTING: 2253118.30

LATITUDE: 33° 12' 52.87959" N LONGITUDE: 097° 34' 09.55654" W

SCALE FACTOR: 1.00016

ELEVATION: 1045.11

MONUMENT DESCRIPTION: BRASS DISK SET IN CONCRETE STAMPED " 13 "

DRIVE TO DESCRIPTION: WEST R.O.W. OF BUSINESS 287/81, AT CARSON ELEMENTARY SCHOOL.

SKETCH
NOT TO SCALE

